



17th

World Wushu Championships

---

**REGULATIONS**

🕒 Aug. 31-Sep. 8, 2025

📍 Brasilia, Brazil

International Federation  
recognised by the



International  
Olympic  
Committee

**Version 2, issued on April 30, 2025 by IWUF**

© International Wushu Federation

Lausanne Office: Avenue de Rhodanie 58, 1007 Lausanne, Switzerland

Beijing Office: 9 Huaweili, Chaoyang District, 100021 Beijing, China

[www.iwuf.org](http://www.iwuf.org)



## CONTENTS

### I. GENERAL INFORMATION

1. INTRODUCTION .....	1
1.1. Brazil Overview .....	1
1.2. Brasilia Overview .....	1
1.3. International Airport .....	2
1.4. Weather .....	3
1.5. Currency .....	3
1.6. Electricity .....	3
1.7. Telephone .....	3
2. INTRODUCTION TO WORLD WUSHU CHAMPIONSHIPS .....	3
3. DATES & PLACE .....	4
3.1. Competition Date .....	4
3.2. Important Dates .....	4
3.2.1. Preliminary Entry .....	4
3.2.2. Final Entry .....	4
3.2.3. Late Entry & Changes (Upon accepted by IWUF) .....	4
3.2.4. Registration of Athletes' Degree of Difficulty and Compulsory Contents .....	4
3.3. Competition Place .....	4
4. VENUES .....	4
5. GENERAL PROGRAM .....	5
6. KEY CONTACTS .....	6

### II. TECHNICAL INFORMATION

7. COMPETITION EVENTS .....	7
7.1. Taolu Events .....	7
7.2. Sanda Events .....	7
8. QUALIFICATIONS .....	7
8.1. Membership .....	7
8.2. Athlete Eligibility .....	7
8.3. Age Requirement .....	7
9. PARTICIPATION METHODS .....	7
9.1. Quota .....	8
9.1.1. Taolu Team .....	8



9.1.2. Sanda Team .....	8
9.2. Participation Events.....	9
9.2.1. Taolu Competition.....	9
9.2.2. Sanda Competition .....	9
9.3. Relevant Documents.....	9
10. COMPETITION RULES.....	9
11. COMPETITION METHODS .....	10
11.1. Taolu Competition Methods .....	10
11.1.1. Preliminaries & Finals.....	10
11.1.2. Individual Routines.....	10
11.1.3. Duilian Routines .....	11
11.1.4. Routine Time Limits .....	11
11.1.5. Accompanying Music.....	11
11.1.6. Roll Call .....	11
11.2. Sanda Competition Methods.....	11
12. COSTUMES & EQUIPMENT.....	12
12.1. Compliance Requirement of Marketing & Advertising .....	12
12.2. Uniforms, Weaponry & Equipment Requirements for Competition.....	12
12.2.1. Taolu Competition .....	12
12.2.2. Sanda Competition .....	12
12.3. Clothing Requirements for Opening & Closing Ceremonies.....	12
12.4. Clothing Requirements for Awards Ceremony.....	13
12.5. Compliance Check at Roll-call Area .....	13
13. PLACING & AWARDS .....	13
13.1. Taolu Competition .....	13
13.2. Sanda Competition .....	13
13.3. Participation Certificate .....	13
14. AWARDS CEREMONY .....	13
14.1. Medalists.....	13
14.2. Athletes & Team Officials .....	14
14.3. Others .....	14
15. ENTRIES.....	14
15.1. Preliminary Entry .....	14
15.2. Final Entry.....	15
15.3. Late Entry & Changes Policy .....	15
15.4. Online Registration of Degree of Difficulty & Compulsory Content .....	16
16. ARRIVALS & ACCREDITATION.....	16



16.1. Arrivals.....	16
16.2. Accreditation.....	16
17. WEIGHT-IN .....	17
18. TECHNICAL MEETING .....	17
19. DRAWING OF LOTS .....	17
20. TECHNICAL OFFICIALS.....	18
20.1. International Technical Officials (ITOs).....	18
20.1.1. Registration .....	18
20.1.2. Uniforms .....	18
20.1.3. Judges' Refresher Course .....	18
20.2. National Technical Officials (NTOs) .....	18
21. SUPERVISORY COMMISSION .....	19

### III. TEAM INFORMATION

22. ACCOMMODATION .....	20
22.1. Accommodation Reservation.....	20
22.2. Room Reservation Policy .....	20
22.3. Hotels Information .....	20
22.3.1. VIP & Team Hotel .....	20
22.3.2. Team Hotels.....	21
22.3.3. Judge Hotel .....	24
23. TRANSPORTATION .....	24
23.1. Transport Services for Arrivals & Departures.....	24
23.2. Local Transport Services.....	25
24. FINANCIAL CONDITIONS .....	25
24.1. Teams .....	25
24.2. Technical Officials.....	25
24.3. Additional Costs .....	25
24.4. Payment Methods.....	25
25. DOPING CONTROL.....	26
26. RESPONSIBILITY OF MEMBER FEDERATIONS.....	26
26.1. Fundamental Principles .....	27
26.2. Attitude of Athletes & Coaches .....	27
26.3. Image of Athletes.....	27
26.4. Insurance .....	27
27. PASSPORT & VISA REQUIREMENTS.....	27



28. ANNEX.....	27
Annex 1.....	29
Annex 2.....	31
Annex 3.....	33

## I. GENERAL INFORMATION

### 1. INTRODUCTION

#### 1.1. Brazil Overview

Brazil is the largest country in both South America and Latin America. At 8.5 million square kilometers (3.2 million square miles) and with over 208 million people, Brazil is the world's fifth-largest country by area and the sixth most populous. The capital is Brasília, and the most populated city is São Paulo. It is the largest country to have Portuguese as an official language and the only one in the America, besides being one of the most multicultural and ethnically diverse nations, due to the strong immigration from various places in the world.

Bounded by the Atlantic Ocean on the east, Brazil has a coastline of 7,491 kilometers (4,655 mi). It borders all other South American countries except Ecuador and Chile and covers 47.3% of the continent's land area. Its Amazon River basin includes a vast tropical forest, home to diverse wildlife, a variety of ecological systems, and extensive natural resources spanning numerous protected habitats. This unique environmental heritage makes Brazil one of 17 megadiverse countries, and is the subject of significant global interest and debate regarding deforestation and environmental protection.



#### 1.2. Brasilia Overview

Brasilia is the federal capital and political center of Brazil and the fifth most populous urban concentration in the country. It is the only modern city worldwide to be recognized as a UNESCO World Heritage Site.

Based on an architectural project designed by Lucio Costa and the world-renowned Oscar Niemeyer, the city came to life in 1960 under President Juscelino Kubitschek. Built in just 1,000 days as the new capital, its level of modernity was shocking; even today the constructions still stand as world landmarks of architecture and urbanism.



Brasilia's population, which today exceeds 3 million, is a mix of people from regions all over Brazil, as reflected in the city's dynamic and vibrant culture. Brasilia, the third richest city in Brazil, is also an important economic hub of the country. Brasilia also sets the standard for green initiatives, with the government encouraging sustainable industries like software development, film production, and gemology.

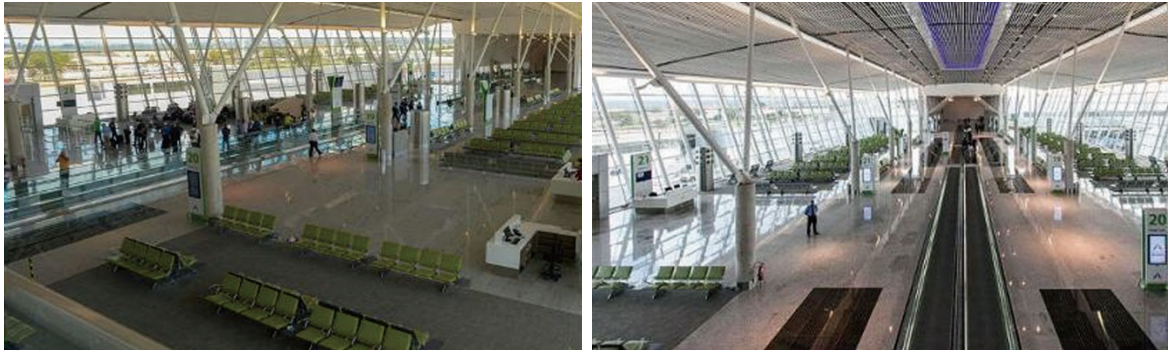


### 1.3. International Airport

**Brasilia International Airport** (Code: BSB) is airport is conveniently located very close to downtown. The distance between the airport and to the Accreditation Center is 12 kilometers (20 minutes by car). Arrivals and departures at this airport will be supported by the LOC in the days predicted in this regulation.



Actually, Brasilia International Airport has a few companies operating direct international flights: Copa Airlines (Panama City), Latam Chile (Santiago), Latam Paraguay (Asuncion), Latam Peru (Lima). Flights coming from other city generally have connection in São Paulo (GRU Airport).



#### **1.4. Weather**

Historical average temperatures for Brasilia in September range from 15°-30°C.

#### **1.5. Currency**

The Brazilian currency is the Real, abbreviated as BRL. The USD/BRL exchange rate is approximately \$1.00/R\$5.60.

#### **1.6. Electricity**

The electricity standard in China is 220V (50Hz).

#### **1.7. Telephone**

To call China from abroad, dial +55 (country code) followed by 61 (city code), followed by the local number.

## **2. INTRODUCTION TO WORLD WUSHU CHAMPIONSHIPS**

The World Wushu Championships (WWC) is the highest level of international competition within the sport of wushu. This biennial event began in 1991 and has been held sixteen editions so far. The WWC always captures the excitement and range of wushu both in the explosive full-contact combat sanda bouts and the dynamic movements and distinct weaponry of taolu forms competition. While the number of participating athletes and member federations has grown substantially as wushu has continued to expand across the globe, the purpose of WWC has, at its core, remained the same: to be the comprehensive pinnacle of wushu competition.

The scale of the 17<sup>th</sup> WWC in Brasilia, Brazil will befit the significance of the event. From August 31 to September 8, 2025, athletes from five continents are expected to compete in Brasilia as the culmination of their hard work and preparation. The Brazilian Wushu Confederation, with the support of city of Brasilia, is responsible for



organizing the 17<sup>th</sup> WWC under the auspices of the IWUF. The 42<sup>nd</sup> IWUF Executive Board Meeting and 17<sup>th</sup> IWUF Congress will be held on September 1<sup>st</sup> and 2<sup>nd</sup> respectively, in conjunction with the 17<sup>th</sup> WWC.

For more information on the 17<sup>th</sup> WWC, please visit the official website of the 17<sup>th</sup> WWC: [www.17thwwc.com.br](http://www.17thwwc.com.br), also visit the official social media, Facebook, Instagram (IG), YouTube.

### 3. DATES & PLACE

#### 3.1. Competition Date (Hereinafter, the dates and times are all in Brasilia Standard Time)

September 3-7, 2025.

#### 3.2. Important Dates

##### 3.2.1. Preliminary Entry

April 30, 2025-May 31, 2025.

##### 3.2.2. Final Entry

June 1, 2025-July 15, 2025.

##### 3.2.3. Late Entry & Changes (Upon accepted by IWUF)

July 16, 2025-August 15, 2025.

##### 3.2.4. Registration of Athletes' Degree of Difficulty and Compulsory Contents

June 1, 2025-August 23, 2025.

#### 3.3. Competition Place

Brasilia, Brazil

### 4. VENUES

Ulysses Guimaraes Convention Center has 54.000 square meters, capacity for almost 10.000 people, and offers all the facilities to the participating teams in the 17th WWC. It is located between 2.1km to 9.1km to the official hotels.

Competition/Training venues: Ulysses Guimaraes Convention Center





## 5. GENERAL PROGRAM

Date	Time	Activity	Location
Aug. 31 (Sun)	Whole Day	Team Arrivals & Registration	Accreditation Desks
		Judges Arrivals & Registration	
	TBD	IWUF Committees' Meetings	TBD
Sep. 1 (Mon)	Whole Day	Team Training	UGCC
	09:00-12:00	42 <sup>nd</sup> IWUF Executive Board Meeting	TBD
		Judges' Refresher Course	TBD
	15:00-18:00	Judges' Refresher Course	
Sep. 2 (Tue)	Whole Day	Team Training	UGCC
	06:00-08:00	Sanda Weight-in	TBD
	09:00-12:00	17 <sup>th</sup> IWUF Congress	TBD
		Judges' Refresher Course	TBD
	14:00-17:00	Technical Meeting & Drawing of Lots	TBD
	15:00-17:00	Judges' Rehearsal	UGCC
	18:00-19:00	Opening Ceremony	
Sep. 3 (Wed)	06:00-07:30	Sanda Weight-in	UGCC
	08:00-12:00	Taolu & Sanda Competition	
	12:30-13:30	Taolu Awards Ceremony	
	15:00-19:00	Taolu & Sanda Competition	
	19:30-20:30	Taolu Awards Ceremony	
Sep. 4 (Thur)	06:00-07:30	Sanda Weight-in	UGCC
	08:00-12:00	Taolu & Sanda Competition	
	12:30-13:30	Taolu Awards Ceremony	
	15:00-19:00	Taolu & Sanda Competition	
	19:30-20:30	Taolu Awards Ceremony	
Sep. 5 (Fri)	06:00-07:30	Sanda Weight-in	UGCC
	08:00-12:00	Taolu & Sanda Competition	
	12:30-13:30	Taolu Awards Ceremony	
	15:00-19:00	Taolu & Sanda Competition	
	19:30-20:30	Taolu Awards Ceremony	



(Continued)

Sep. 6 (Sat)	06:00-07:30	Sanda Weight-in	UGCC
	08:00-12:00	Taolu & Sanda Competition	
	12:30-13:30	Taolu Awards Ceremony	
	15:00-19:00	Taolu & Sanda Competition	
	19:30-20:30	Taolu Awards Ceremony	
Sep. 7 (Sun)	06:00-07:30	Sanda Weight-in	UGCC
	08:00-10:00	Taolu & Sanda Competition	
	10:30-12:30	Taolu & Sanda Awards Ceremony	
	14:00-16:00	Taolu & Sanda Competition	
	16:30-18:30	Taolu & Sanda Awards Ceremony	
	19:00-20:00	Closing Ceremony	
Sep. 8 (Mon)	Before 12:00	Departures	

- ★ Note: 1. This program is subject to change depending on the number of the registered athletes.  
2. UGCC = Ulysses Guimaraes Convention Center.

## 6. KEY CONTACTS

### - IWUF Secretariat

Tel: +86-10-87774492

Email: events@iwuf.org

### - Organizing Committee of 17<sup>th</sup> WWC

(hereinafter referred to as "Local Organizing Committee", abbreviated as "LOC")

Tel: +55-19-982603000

Email: mavifea@gmail.com



## II. TECHNICAL INFORMATION

### 7. COMPETITION EVENTS

#### 7.1. Taolu Events

Men & women:

- Bare-hand routines: Changquan, Nanquan, Taijiquan.
- Short-weapon routines: Jianshu, Daoshu, Nandao, Taijijian.
- Long-weapon routines: Qiangshu, Gunshu, Nangun.
- Duilian (Choreographed sparring) (composed of 2-3 persons, men and women are not mixed).

#### 7.2. Sanda Events

Men: 48kg, 52kg, 56kg, 60kg, 65kg, 70kg, 75kg, 80kg, 85kg, 90kg, 100kg, 100kg+.

Women: 48kg, 52kg, 56kg, 60kg, 65kg, 70kg, 75kg.

### 8. QUALIFICATIONS

#### 8.1. Membership

Only those federations/associations which have paid their IWUF annual membership fees for 2024 and 2025 will be permitted to participate in the 17<sup>th</sup> WWC.

New IWUF member federations may be invited to take part in the 17<sup>th</sup> WWC after their membership applications have been accepted by the IWUF. Hereinafter the IWUF member federation is referred to as "NF".

#### 8.2. Athlete Eligibility

Athletes must be citizens of the country/territory that they are representing.

Athletes who have dual citizenship can only represent one country/territory in the championships.

#### 8.3. Age Requirement

Taolu athletes 12 years old and older, i.e. born in and before 2013, may participate.

Sanda athletes between 18-40 years old, i.e. born between 1985 and 2007, may participate.

### 9. PARTICIPATION METHODS



## 9.1. Quota

Each NF can enter at most 1 team. Each team shall be composed of both taolu and sanda members.

Each NF can enter a maximum total of 26 members with up to 13 members designated each for taolu team and sanda team.

### 9.1.1. Taolu Team

Each taolu team shall be composed of a maximum of 13 members.

- **Athlete**

Each team may, at most, enter 8 athletes.

- **Team Official**

Each team may, at most, enter 4 team officials:

- 1 team leader.
- 2 coaches.
- 1 doctor.

- **Team Judge**

Each team may, at most, enter 1 taolu team judge.

- **Observer**

Extra team delegate(s) exceeding the quota shall be registered as observer(s).

### 9.1.2. Sanda Team

Each sanda team shall be composed of a maximum of 13 members.

- **Athlete**

Each team may, at most, enter 8 athletes (a maximum of 5 men and 3 women).

- **Team Official**

Each team may, at most, enter 4 team officials including:

- 1 team leader.
- 2 coaches.
- 1 doctor.



- **Team Judge**

Each team may, at most, enter 1 sanda team judge.

- **Observer**

Extra team delegate(s) exceeding the quota shall be registered as observer(s).

## **9.2. Participation Events**

### **9.2.1. Taolu Competition**

Each athlete may enter at most 4 competition events:

- 1 bare-handed routine.
- 1 short-weapon routine.
- 1 long-weapon routine.
- 1 duilian routine.

### **9.2.2. Sanda Competition**

- Each team may enter at most 1 athlete per weight category.
- Each athlete may enter only 1 weight category.

## **9.3. Relevant Documents**

Upon arrival at the Accreditation Center, the team leader must present the following documents with the LOC:

- Completed and signed Waiver of Liabilities (Annex 1) of all participants, which must be signed by his/her parent or legal guardian for the participant who is under 18 years of age.
- Medical Certificates (Annex 2) of all athletes issued by a qualified medical doctor from a check-up performed within a period of **15 days** prior to the date of registration at the competition.
- Life Accidental Injury Insurance Certificates of all athletes.

## **10. COMPETITION RULES**

Unless otherwise stated within these regulations, the competition will be conducted in accordance with:

- IWUF Wushu Taolu Competition Rules and Judging Methods (2024) (hereinafter referred to as "rules")
- IWUF Wushu Sanda Competition Rules and Judging Methods (2024) (hereinafter referred to as "rules")



The rules may be interpreted solely at the discretion of the IWUF. In the event of language discrepancies in the rules, the English version shall prevail.

## 11. COMPETITION METHODS

### 11.1. Taolu Competition Methods

#### 11.1.1. Preliminaries & Finals

##### - Preliminaries

In the case when the number of participants in an event exceeds 50 athletes, the athletes will be divided evenly into several groups for preliminaries.

The 12-top ranking athletes in the same taolu event of the 16<sup>th</sup> WWC, if registered in the 17<sup>th</sup> WWC, will be seeded alternately among the groups when preliminary round.

The athletes' start order of each group in preliminaries is determined by a drawing of lots.

##### - Finals

The finals consist of 12 athletes. Equal numbers of top finishers from each group will qualify for the finals.

The athletes' start order in finals is determined by a drawing of lots that will be held 1 day prior to the date of finals.

#### 11.1.2. Individual Routines

For changquan, nanquan, taijiquan, jianshu, daoshu, taijijian, nandao, qiangshu, gunshu and nangun competitions, the "Events with Degree of Difficulty Scoring Methods and Standards" in the rules will be implemented.

Within a routine, the same jumping difficulty movement can be performed 2 times at most, but the connecting movement cannot be repeated (e.g. within a single optional routine an athlete may register and perform xuànfēngjiǎo 360° (tornado kick360°) at most 2 times, but the connection movement for each tornado kick must be different).

In changquan-type events, 323B, 323C, 324B, 324C and 353C must be connected to the connection movements as stipulated in the rules table 10-3-7 when landing.

In nanquan-type events, 323B, 323C, 324B and 324C must be connected to the connection movements as stipulated in the rules table 10-3-8 when landing.



In Taijiquan-type events, 323B, 323C, 324B and 324C must be connected to the connection movements as stipulated in the rules table 10-3-9 when landing.

All athletes are required to execute their optional routine's relevant compulsory/mandatory content, and failure to do so will result in deductions as stipulated in the rules.

#### 11.1.3. Duilian Routines

The "Events without Degree of Difficulty Scoring Methods and Standards" in the rules will be implemented.

Athletes are required to execute their duilian routine's relevant compulsory/mandatory content, and failure to do so will result in deductions as stipulated in the rules.

#### 11.1.4. Routine Time Limits

- Changquan, nanquan, jianshu, daoshu, nandao, qiangshu, gunshu and nangun routines: From 1 minute 20 seconds to 1 minute 35 seconds in total duration.
- Taijiquan and taijijian routines: From 2 minutes 45 seconds to 3 minutes 15seconds in total duration.
- Duilian routines: From 50 seconds to 1 minute in total duration.

#### 11.1.5. Accompanying Music

Accompanying music is required for taijiquan and taijijian routines.

Each NF must upload the accompanying music through the IWUF Online Registration System with their final entry submission. **NFs shall be responsible for the music used.**

Accompanying music with vocals and/or lyrics is not permitted.

#### 11.1.6. Roll Call

Athletes shall arrive at the designated area for the first roll-call, which will occur 30 minutes prior to the start of the event. The second roll-call will occur 20 minutes prior to the start of the event, and the third roll-call will occur 10 minutes prior to the start of the event. Failure to be present for roll-call will result in forfeit.

### 11.2. Sanda Competition Methods

The competition will utilize the single-knockout system. However, if the number of athletes in a given weight category is 3, a single round-robin competition system will be adopted.



The duration of each round shall be 2 minutes with a 1-minute rest in between.

Following arrival and accreditation, athletes will undergo an initial weigh-in and drawing of lots as stipulated in the schedule. Athletes that are competing on a specific day of competition are required to weigh-in at the specific time and place prior to the start of the day's event.

## **12. COSTUMES & EQUIPMENT**

### **12.1. Compliance Requirement of Marketing & Advertising**

All teams must follow the IWUF Brand Control Guidelines for Wushu Competition Uniforms (excerpt) (Annex 3).

### **12.2. Uniforms, Weaponry & Equipment Requirements for Competition**

#### **12.2.1. Taolu Competition**

Athletes shall wear wushu competition costumes and use the competition weaponry in compliance with the rules during all events. All athletes must provide their own uniforms and weaponry.

2 competition bibs (20cm\*15cm) for each athlete's use will be provided by the LOC to the teams upon accreditation.

The athlete should show his/her competition bib to the Head Judge before he/she enters the competition mat.

#### **12.2.2. Sanda Competition**

Athletes shall wear costumes and protective gear in compliance with the rule to participate in the competition.

Each athlete must provide 2 sets of competition uniforms: 1 set in red and 1 set in blue.

Each athlete must provide their own gum guard, groin cup and hand wraps.

Gloves, headgear and chest protector manufactured by the IWUF's certified supplier(s) will be provided by the LOC.

### **12.3. Clothing Requirements for Opening & Closing Ceremonies**

All teams must wear their official national/territorial team uniforms at the Opening and Closing Ceremonies.



## 12.4. Clothing Requirements for Awards Ceremony

Medalists are expected to attend the Awards Ceremony in their national/territorial team uniforms.

## 12.5. Compliance Check at Roll-call Area

Uniforms and weapons checks will be conducted at the Roll-call Area in accordance with stated regulations and requirements. Uniforms and weapons checks are conducted by the Chief Registrar and the Roll-call Officials as stipulated in the rules. Non-compliance may be subject to disqualification from the competition.

# 13. PLACING & AWARDS

## 13.1. Taolu Competition

- **1<sup>st</sup> place:** Gold medal & Certificate.
- **2<sup>nd</sup> place:** Silver medal & Certificate.
- **3<sup>rd</sup> place:** Bronze medal & Certificate.
- **4<sup>th</sup>-8<sup>th</sup> place:** Certificate.

## 13.2. Sanda Competition

- **1<sup>st</sup> place:** Gold medal & Certificate.
- **2<sup>nd</sup> place:** Silver medal & Certificate.
- **3<sup>rd</sup> place (juxtaposition):** Bronze medal & Certificate.

## 13.3. Participation Certificate

All accredited people, including team leaders, coaches, doctors, observers and athletes will receive a 17<sup>th</sup> WWC participation certificate.

Team leaders are required to collect the participation certificates, as well as certificates of taolu athletes placing 4<sup>th</sup>-8<sup>th</sup> (if applicable), for their team from the LOC at the Results & Certificate Office.

# 14. AWARDS CEREMONY

## 14.1. Medalists

**10 minutes** before the Awards Ceremony starts, the medalists will be escorted by staff to the Waiting Area to get ready for the ceremony.

Medalists are required to attend the Awards Ceremony to receive their medals in person.



Medalists are expected to take off caps/hats/sunglasses during the Awards Ceremony.

Medalists are required to face the flags while they are being raised.

#### **14.2. Athletes & Team Officials**

Athletes and team officials must stay at the designated area and are not allowed to take any other national, cultural or religious symbols onto the podium.

#### **14.3. Others**

In case a medalist is unable to attend the Awards Ceremony for a valid reason, his/her medal and certificate may be presented to an official of the relevant delegation. Absence without a valid reason will result in the forfeiture of the right to receive a medal.

If there are fewer than 3 medalists in a single event, no Awards Ceremony will be held for that event.

The team leader will receive the medals and certificates at the Results & Certificate Office.

### **15. ENTRIES**

#### **15.1. Preliminary Entry**

Preliminary entry must be submitted through the IWUF Online Registration System.

##### **- IWUF Online Registration System**

URL: <https://registration.iwuf.org>

Contact person: HUANG Xilong

Tel: +86-19952270889

Email: [Service@jyywty.com](mailto:Service@jyywty.com)

Tech-support: Jiangyin Yunwu Shiwu Sports Technology Co., Ltd

Online preliminary entry will be open from **April 30, 2025** and closed on **May 31, 2025, 23:59**.

All teams must state the number of athletes and team officials as accurately as possible taking part in the events so that the LOC may reserve the hotels and prepare the organization of the event accordingly. There is no guarantee for hotel rooms reservation for teams failed to submit their preliminary entry before the required deadline.

All teams are required to complete their online preliminary entry before the deadline to access the final entry system.



## 15.2. Final Entry

Final entry must be submitted through the IWUF Online Registration System.

All sections of the online entry must be completed in full, including the uploading of the following documents:

- Photos of the participants (white background, head filling 70-80% of the photo, at least 480 pixels in width and 600 pixels in height).
- Passports of the participants (must be valid for at least 6 months following their final day of travel).

Online final entry will be open from **June 1, 2025** and closed on **July 15, 2025, 23:59**.

All payments due to the LOC must be paid in full for registration to be considered as completed.

Each team is required to print a copy of the submitted entry and present it to the LOC upon registration.

## 15.3. Late Entry & Changes Policy

After the final entry deadline, teams with requests for the late entries or changes must submit a written document for approval and shall pay corresponding fees before the late entry and changes deadline, otherwise request will be denied.

Late entry and changes will be open from **July 16, 2025** and closed on **August 15, 2025, 23:59**.

Any request to change the entry (including the late entry) will be handled as follows:

- The late entry is subject to the approval of the IWUF and, if accepted, it will incur a late-entry fee of **USD 100** per participant.
- Replacing a participant is subject to approval by the IWUF and, if accepted, it will incur a replacement fee of **USD 100** per participant.
- If changes are required due to incorrect or missing registration information, those changes are subject to approval by the IWUF and, if accepted, it will incur a fee of **USD 50** per change.

Late Entry	Replacement	Information Change
USD 100	USD 100	USD 50

The above fees must be paid via wire transfer to the IWUF before **August 15, 2025, 23:59**.

Beneficiary Name/Bank Account Name	International Wushu Federation
Beneficiary Address	Avenue de Rhodanie 58, 1007 Lausanne, Switzerland



(Continued)

Bank Name	UBS AG
Bank Address	Place St-François 16, Case postale, CH-1002 Lausanne, Switzerland
Bank Account Number	0243-166188.61X
Bank Clearing	0243
SWIFT Code	UBSWCHZH80A
IBAN	CH680024324316618861X
Company Taxpayer Identification Number	CH TVA No. CHE-436.351.545
Country	Switzerland

#### 15.4. Online Registration of Degree of Difficulty & Compulsory Content

Online registration of the athletes' Degree of Difficulty and compulsory content of the optional routines must be submitted through the IWUF Online Registration System. The system will be open from **June 1, 2025** and closed on **August 23, 2025, 23:59**.

### 16. ARRIVALS & ACCREDITATION

#### 16.1. Arrivals

The following accredited people are required to register with the LOC at the designated Accreditation Desks no later than:

- Team judges: **23:59 on August 31, 2025**.
- Athletes & team officials: **23:59 on September 1, 2025**.

#### 16.2. Accreditation

Accreditation Desks will open at **9:00 on August 31, 2025**.

Upon arrival at the Accreditation Center, the team leader is required to complete the following process to the LOC:

1	Present each team members' passports
2	Submit Final Entry Form with signature and stamp and confirm the registration information
3	Submit 3 national flags (size: 1m*2m)
5	Submit signed Waiver of Liabilities of all participants (Annex 1)
6	Submit valid Medical Certificates (Sample) of all athletes (Annex 2)



(Continued)

7	Submit valid Life Accidental Injury Insurance Certificates of all athletes
8	Pay the relevant participation fees in full (if applicable)
9	Pay the relevant penalty fees in full (if applicable)
10	Submit a bank receipt of payment (either in paper or electronic documents)
11	Confirm each athlete's Registration Form for Degree of Difficulty and Compulsory Content of Optional Routines and sign the form
12	Sign and confirm all the above items are completed

Accreditation cards will be given to the team leader upon completion of the accreditation process. All personnel must participate in the official activities with their accreditation card during the 17<sup>th</sup> WWC.

The competition and training schedules will be announced after accreditation has concluded.

## 17. WEIGHT-IN

The first official weigh-in for all athletes will take place at **6:00** on **September 2, 2025**. Furthermore, the weigh-in will be conducted on daily basis at **6:00**, athletes must attend a weigh-in on each day they participate in competition (specific places for each weigh-in will be announced accordingly).

**Accreditation cards and passports** must be presented at each weigh-in session. A sanda athlete's failure to attend any required weigh-in will result in his/her disqualification from the competition.

## 18. TECHNICAL MEETING

The technical meeting for team managers and coaches will take place at **14:00** on **September 2, 2025**. Each team should send 1-3 representative(s) to attend the meeting. The place of the technical meeting will be announced in due course.

The technical meeting content will be presented as follows:

- IWUF Event Guidelines (IWUF representatives).
- Event Logistics Information (LOC representatives).
- Event Technical Details (Chair of Jury of Appeals and Chief Referee).
- Other Matters.

## 19. DRAWING OF LOTS

After the technical meeting, the drawing of lots will be conducted by the scheduler-recorder group supervised



by the Jury of Appeals and the Chief Referee on **September 2, 2025**.

The drawing of lots for taolu and sanda disciplines will be held simultaneously in two separate rooms. Each Team should send 1-2 representative(s) for each discipline to attend the sessions.

The Jury of Appeals will draw on behalf of the teams that are unable to send a representative to attend.

## **20. TECHNICAL OFFICIALS**

### **20.1. International Technical Officials (ITOs)**

Each team may send at most 1 taolu team judge and 1 sanda team judge to officiate at the 17<sup>th</sup> WWC subject to approval of the IWUF.

The IWUF will select and appoint the independent judges and the Jury of Appeals at its discretion to serve at the 17<sup>th</sup> WWC.

All team judges and independent judges of the 17<sup>th</sup> WWC must hold their valid IWUF Judge's License at the time of the competition.

#### **20.1.1. Registration**

The information for the team judges must be submitted at the time of their team registration.

The Jury of Appeals and all independent judges appointed by the IWUF shall submit their registration Information through the IWUF Online Registration System.

All team judges and independent judges of the 17<sup>th</sup> WWC must input their valid IWUF Judge's License numbers through the online registration system.

#### **20.1.2. Uniforms**

All ITOs shall prepare their own black jackets, white shirts, black slacks, and black leather shoes, as well as bring the IWUF ties/scarfs.

#### **20.1.3. Judges' Refresher Course**

All 17<sup>th</sup> WWC judges are required to participate in the Judges' Refresher Course. Absence without a valid reason will be forfeiture of the right to officiate at the 17<sup>th</sup> WWC.

### **20.2. National Technical Officials (NTOs)**

All NTOs served at the 17<sup>th</sup> WWC will be nominated by the LOC.



## 21. SUPERVISORY COMMISSION

The 17<sup>th</sup> WWC Supervisory Commission shall be established by the IWUF, with the purpose of and the right to resolve any disputes or investigate any issues that arise during the course of this competition to ensure the smooth execution of the event.

The Supervisory Commission for an IWUF competition consists of 3-5 members appointed by the President of the IWUF and is responsible for overseeing the competition management and dispute mediation for the entire duration of this competition and not beyond. Specific descriptions of responsibilities include:

- The Commission will ensure that competitions adhere to principles of fair play, impartiality, and transparency.
- The Commission represents the IWUF in handling disputes regarding the competitions that arise between the NFs and/or teams and/or LOC, and has the right to resolve such disputes. However, the Commission does not directly interfere with the competition proceedings or disputes arise within the competition, which are responsibility of the Jury of Appeals and the relevant judging panel.
- The Commission represents the IWUF in coordinating between the NFs and/or teams and/or LOC.
- The Commission shall report any irregularities or violations observed during the competitions to the IWUF President and the IWUF Executive Board.
- The Commission shall monitor and demand that NFs take responsibility for their athletes' general attitude and comportment



### III. TEAM INFORMATION

#### 22. ACCOMMODATION

##### 22.1. Accommodation Reservation

All accredited people are required to lodge at the designated hotels as arranged by the LOC.

Teams unable to stay in the designated hotels due to special reasons shall pay a participation fee of **USD 200** per person. In this case, it shall be responsibility of the team for their accommodation, meals, transportation as well as consequences arising at a result of this.

The LOC will arrange accommodation and meals for all accredited people **from the evening on August 31, 2025, until the midday on September 8, 2025**. Participants who would like to arrive earlier or depart later than the required dates should provide the dates for the intended duration of stay during the final registration process, and must ensure to book accommodations accordingly, with daily rates applying for extended stays and taking the hotel check-in time of **15:00** into consideration.

Hotel check-in is after **15:00**, and accommodations should be booked accordingly (e.g. teams wishing to check in on **September 1 before 15:00** must have booked their accommodations beginning on **August 31**).

Hotel reservations are available on a first come first serve basis, we advise teams to make your reservations as early as possible.

##### 22.2. Room Reservation Policy

Teams with odd number of delegates including athletes and team officials when having reserved double or triple rooms, the extra single delegate will be allocated by the LOC in the double or triple room with other team's member, if the individual chooses not to pay for the price of a single room.

The team judges when having reserved double or triple rooms will be allocated in double or triple room with other team judges by the LOC.

The LOC will allocate the hotels for the teams based on the other they submit their final entry.

##### 22.3. Hotels Information

###### 22.3.1. VIP & Team Hotel

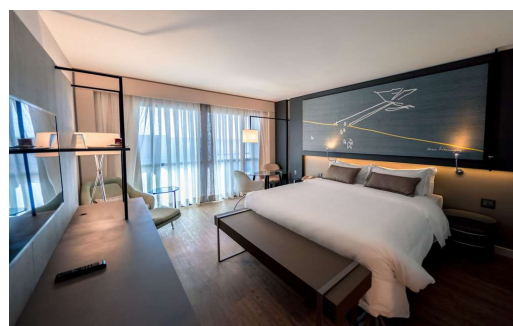
- **Royal Tulip Resort (5-star)**

**Address:** SHTN Trecho 1

Distance to Ulysses Guimaraes Convention Center is 15 minutes by car (9.1km).

Royal Tulip Resort is an excellent choice for travelers visiting Brasilia, offering a luxury environment alongside many helpful amenities designed to enhance your stay. Guests of Royal Tulip Resort are also welcome to enjoy a pool and free breakfast, located on site. Free Wi-Fi is offered to guests, and rooms at Royal Tulip Resort offer a flat screen TV.

There are more than 200 rooms, special catering with swimming pool view. The hotel also has lobby bar, swimming pool, SPA room, fitness room, beauty salon, on the banks of the Paranoá River, with a beautiful lake's view.



Accreditation Category	Participation Fee Per Person Per Night		
	Single Room Only one person allowed	Double Room Two persons allowed	Triple Room Three persons allowed
VIPs	USD 296	USD 203	USD 176
In-quota athletes & team officials	USD 296	USD 203	USD 176
Observer(s)	USD 306	USD 213	USD 186

### 22.3.2. Team Hotels

#### - San Marco Hotel (4-star)

**Address:** SHS Q 05 Bloco C

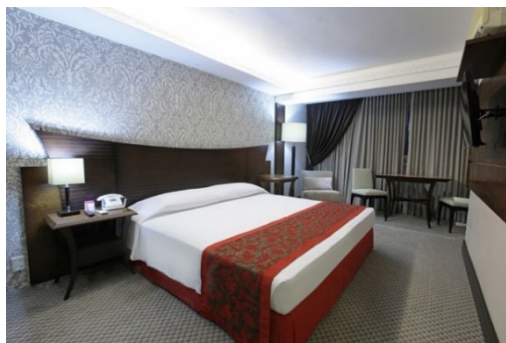
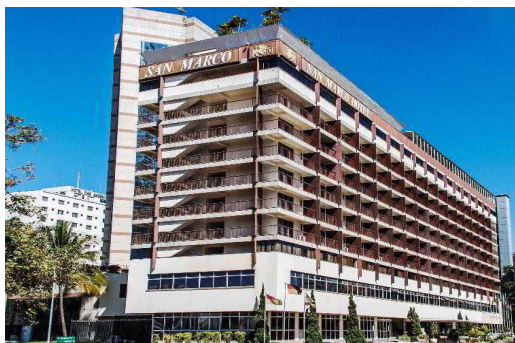
Distance to Ulysses Guimaraes Convention Center is 2.3km (7 minutes by car).

The San Marco Hotel is located in the Hotel Sector South, next to the nerve center of national



decisions. Near the Esplanade of Ministries, High Courts, Congress and the Planalto Palace. The location is privileged, surrounded by shopping, shopping areas, banks, bars, restaurants and nightclubs. The San Marco Hotel is the perfect place for those who come to Brasilia for business or pleasure. Internal and external parking. Bar and panoramic restaurant.

The hotel has 256 apartments. panoramic outdoor pool with hot tub on the roof, an indoor pool with sauna steam or dry, massage, Jacuzzi and Scottish shower.



Accreditation Category	Participation Fee Per Person Per Night		
	Single Room Only one person allowed	Double Room Two persons allowed	Triple Room Three persons allowed
In-quota athletes & team officials	USD 156	USD 123	USD 117
Observer(s)	USD 166	USD 133	USD 127

- **Golden Tulip Hotel (4-star)**

**Address:** SHTN Trecho 1

Distance to Ulysses Guimaraes Convention Center is 9.1km (15 minutes by car).

The Golden Tulip Hotel is ideally situated in Asa Norte sector, next to Palácio da Alvorada, the President Residence. It is also close to Palácio do Planalto, the official workplace of the President, Supremo Tribunal Federal (Legal Court) and the National Congress Building (Senate, Chamber of Deputies and Congress). Besides, it has the privilege of being located on the shores of Paranoá Lake. The Brasília International Airport is easily reachable within 15 minutes from the hotel.

The hotel has 448 comfortable rooms divided in two ambiances and all equipped with air conditioning, minibar electronic safe, cable TV, and high-speed internet access.



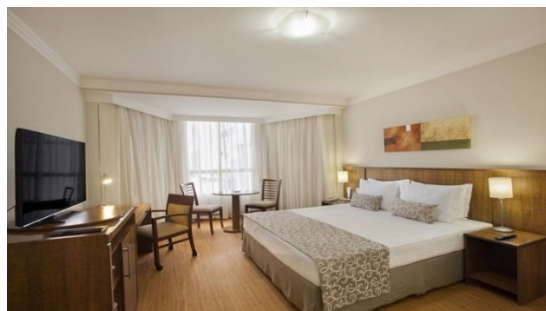
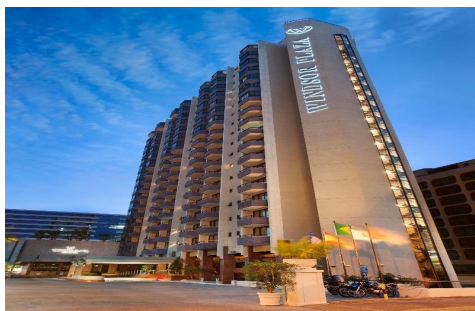
Accreditation Category	Participation Fee Per Person Per Night		
	Single Room Only one person allowed	Double Room Two persons allowed	Triple Room Three persons allowed
In-quota athletes & team officials	USD 221	USD 159	USD 142
Observer(s)	USD 231	USD 169	USD 152

- **Windsor Plaza Hotel (5-star)**

**Address:** SHS Quadra 5

Distance to Ulysses Guimaraes Convention Center is 2.1km (6 minutes by car).

Windsor Plaza Hotel is very well located it is 1.7 km from Cultural Complex of the Republic, 2 km from Brasília Cathedral and a 19-minute walk from Central Bank of Brazil. Featuring a bar, this 5-star hotel has air-conditioned rooms with free Wi-Fi and a private bathroom. The accommodation offers a year-round outdoor pool, a fitness center, a sauna and a restaurant. The rooms at this hotel have a flat-screen TV with cable channels and a safe. Integrating guest rooms, restaurants and conference facilities. Various dishes here are based on the theme of nutrition and health, which can meet the different needs of guests. The hotel has conference facilities, which can meet the needs of a variety of high-level conferences. The hotel is also equipped with a gym, pedicure clubs, a hairdressing center, a business center and other functional facilities.





Accreditation Category	Participation Fee Per Person Per Night		
	Single Room Only one person allowed	Double Room Two persons allowed	Triple Room Three persons allowed
In-quota athletes & team officials	USD 277	USD 187	USD 162
Observer(s)	USD 287	USD 197	USD 172

### 22.3.3. Judge Hotel

#### - Windsor Brasilia Hotel (4-star plus)

**Address:** SQN Quadra 1

Distance to Ulysses Guimaraes Convention Center is 2km (5 minutes by car).

Rooms at Windsor Brasilia Hotel offer a flat screen TV, a minibar, and air conditioning providing exceptional comfort and convenience, and guests can go online with free Wi-Fi.

A 24-hour front desk, a concierge, and room service are some of the conveniences offered at this hotel.



Accreditation Category	Participation Fee Per Person Per Night		
	Single Room Only one person allowed	Double Room Two persons allowed	Triple Room Three persons allowed
Judges	USD 267	USD 177	USD 152

## 23. TRANSPORTATION

### 23.1. Transport Services for Arrivals & Departures



Transport services between the Brasilia International Airport and the official hotels will be provided by the LOC for all accredited people on their arrival and departure days.

- Pick up from the designated airport to the official hotels: **August 31, 2025** and **September 1, 2025**.
- Drop off from the official hotels to the designated airport: **September 8, 2025**.

### 23.2. Local Transport Services

Local transport services between the official hotels and the competition/training venues will be provided by shuttle buses. A detailed transport schedule will be provided upon arrival.

## 24. FINANCIAL CONDITIONS

### 24.1. Teams

Any international or domestic airfare and related travel expenses, as well as the participation fees of all participants shall be borne by themselves. The participation fees include accommodation, meals, pick-up/drop-off to and from the designated airport, local transportation, entry (excluding the late entry and changes fees) and certificate, etc.

### 24.2. Technical Officials

The international airfare, accommodation and meals shall be provided by the LOC for the appointed independent judges and the Jury of Appeals. The expenses above for the team judges shall be borne by their teams themselves.

### 24.3. Additional Costs

Participants arriving early or departing late may be subject to additional costs related thereto which shall be borne by the participants themselves.

### 24.4. Payment Methods

All teams are required to complete full payment in advance to the LOC by **23:59 on July 15, 2025** through international wire transfer. Until complete payment is received, hotel rooms will not be reserved, and accreditation will not be issued.

Teams that are unable to pay through international remittance due to government policies and restrictions should communicate with the LOC in advance to make arrangements, otherwise accreditation will not be issued.

All international wire transfer and bank fees are to be paid by the teams transferring the funds themselves.



Proof of full payment should be sent to the LOC by email and brought along to the LOC by the team leader. The LOC requires that all participation fees are to be paid in advance in order to secure accommodation as required by the official hotels. The LOC will be unable to guarantee a team's required accommodation without pre-payment in full. Teams are requested to be mindful of this when submitting their final entry.

The bank information of the LOC:

56	56A: Intermediary Bank SWIFT: IRVTUS3N BANK NAME: The Bank of New York Mellon Account: 8901520306
57	57A: Beneficiary Bank SWIF: OURIBRSPXXX BANK NAME: Banco Ourinvest S. A. Sao Paulo-BR
59	59: Beneficiary's Information Beneficiary: LASTRO RDV DISTRIB. DE TITULOS E VALORES MOBS LTDA CNPJ: 71.590.442/0001-83 ARARAS - SAO PAULO – BRAZIL ACCOUNT / IBAN: BR2178632767000010000113484C1
70	70: INVOICE # FINAL BENEFICIARY: CNPJ 01.010.189/0001-89 BRAZILIAN WUSHU CONFEDERATION <b>(this Info is mandatory)</b>

## 25. DOPING CONTROL

Doping control will be conducted during the 17<sup>th</sup> WWC according to the requirements of the International Olympic Committee (IOC) and the World Anti-Doping Agency (WADA), and will follow the procedure prescribed in the IWUF Anti-Doping Rules. The number of tests will be decided by the International Testing Agency (ITA). If an athlete is found have positively doped through the doping process, he/she will be dealt with in accordance with the IWUF Anti-Doping Rules.

## 26. RESPONSIBILITY OF MEMBER FEDERATIONS

The IWUF member federations (NFs) are responsible for their officials, coaches, athletes, doctors, team judges and observers adhering to the IWUF and to all relevant rules established by the IWUF and the LOC. NFs should ensure that their participants hold themselves to the highest standards in all their actions during the event.



### 26.1. Fundamental Principles

All NFs' members participating in the 17<sup>th</sup> WWC must observe and respect the IWUF constitution, rules, regulations, and representatives. Individuals deemed to have acted against the IWUF, its principles, interests or purpose may be subject to suspension or expulsion from the event and/or cancellation of their accreditation.

### 26.2. Attitude of Athletes & Coaches

The athletes will compete under the responsibility of their NFs. The NFs are fully responsible regarding the general attitude and comportment of their athletes. Coaches should respect the judging panel and all complaints must be conducted in accordance with competition procedures. Athletes and coaches should comply with the IWUF Code of Ethics. Any act against the IWUF judging panel may be subject to suspension or expulsion from the event and/or cancellation of their accreditation and/or competition results.

### 26.3. Image of Athletes

Each NF is responsible for obtaining the rights for the IWUF to use its athletes' images at the discretion of the IWUF for promotional purposes in all forms.

### 26.4. Insurance

Each NF is fully and sole responsible for insuring its athletes against injury and third-party risk (public liability) during the period of the 17<sup>th</sup> WWC. The IWUF and the LOC are not responsible in part or in whole of the said liability.

## 27. PASSPORT & VISA REQUIREMENTS

All participants must hold a valid passport and should allow plenty of time for visa application and processing.

To avoid complications during visa application and travel as possible, it is suggested that all participants' passports are valid for at least 6 months following their final day of travel.

Teams that require visa invitation letters should state their requests in the Entry Form from **April 30, 2025**.

If you need any assistance on visa issues, please contact the LOC by email: [17thwwc@gmail.com](mailto:17thwwc@gmail.com).

**NOTE: We strongly recommend teams that need to apply for visas do so as early as possible.**

## 28. ANNEX



Annex 1: Wavier of Liabilities

Annex 2: Medical Certificate (Sample)

Annex 3: IWUF Brand Control Guidelines for Wushu Competition Uniforms (excerpt)



## Annex 1

## 17<sup>th</sup> World Wushu Championships

### Wavier of Liabilities

Federation				Color ID Photo
Name of Participant				
Date of Birth		Gender		
Nationality		Passport No.		
Role of Participant				
*Athlete <input type="checkbox"/> *Team Manager <input type="checkbox"/> *Coach <input type="checkbox"/> *Doctor <input type="checkbox"/> *Observer <input type="checkbox"/>				
<p>I, the undersigned, knowingly and without duress, do voluntarily submit my Entry to the 17<sup>th</sup> World Wushu Championships (WWC). The 17<sup>th</sup> World Wushu Championships is hosted by the International Wushu Federation (IWUF) and organized by the Brazilian Wushu Confederation and the City of Brasilia, hereinafter the Brazilian Wushu Confederation and the City of Brasilia are referred as "Organizing Committee". I understand and acknowledge that the participation in the 17<sup>th</sup> World Wushu Championships involves inherent risk of losses, damages or injuries, including but not limited to risks deriving from participating in the competition and trainings, in the use of the sporting facilities or equipment and/or risks arising from actions or omissions of other participants or other third parties. I further understand that my participation in the 17<sup>th</sup> World Wushu Championships is subject to my agreement and acceptance of this Waiver of Liabilities ("Waiver"). In consideration of the IWUF and the Organizing Committee accepting my application, I hereby assume all risk of physical and mental injuries, disabilities and losses which may result from or in connection with my participation in the 17<sup>th</sup> World Wushu Championships. Acting for myself, heirs, personal officers, agents, representatives and assignees, I do hereby release, to the extent permissible, the IWUF and the Organizing Committee including all associates, auxiliaries and affiliates, such as but not limited to their officers, agents, employees, representatives, volunteers, judges and referees and other related members from all claims, actions, suits, and controversies related to any loss, damage or injury by reason of any matter, cause or thing whatsoever that I may sustain as a result of or in connection with my participation in the 17<sup>th</sup> World Wushu Championships. I fully understand and acknowledge that it is my sole responsibility to determine whether I am fit and healthy enough to participate in any events without posing a risk to myself or others. I hereby certify that, to the best of my knowledge, this is the case. I understand to have a duty to inspect the state of the used sporting facilities and equipment, and I waive any claim arising out of any respective defect. I fully understand that all medical attention or treatment afforded to me by the IWUF and the Organizing Committee including all associates, auxiliaries and affiliates, e.g. their officers, medical personnel, representatives, employees, volunteers, and all other related members, will be of the first aid type only, and I hereby consent to receiving such treatment and release the IWUF and the Organizing Committee as well as their officers, representatives, volunteers, employees and all other related members from any liability for such aid. I understand it is my personal obligation to obtain my own medical coverage. I am fully and solely responsible for adequately insuring myself against injury and third-party risk (public liability), with such insurance to cover the period before, during and after the event. The IWUF and the Organizing Committee including all associates are</p>				



not responsible in part or in whole for any damages or medical or hospital expenses incurred as a result of participation in the 17<sup>th</sup> World Wushu Championships.

I agree to abide by and follow the Rules established by the IWUF and the Organizing Committee and follow all received instructions. I acknowledge and agree that it is my personal responsibility to be informed about all aforementioned Rules and instructions. I agree that I will conduct myself in a professional and courteous manner at all times and to be subject to penalties and sanctions for violations related thereto, pursuant to the IWUF Constitution and the IWUF Ethics Code as updated from time to time and other Rules established by the IWUF and the Organizing Committee. I understand that any dispute must be resolved in accordance with the IWUF Constitution and any further applicable IWUF Rules. I agree that my performance, attendance, and participation at the 17<sup>th</sup> World Wushu Championships may be photographed, filmed or otherwise recorded or released or telecast live. I consent to allow the IWUF and the Organizing Committee use of my name, likeness, address, voices, poses, pictures, videos, live or non-live coverage and biographical and biological data concerning full or parts, in any form or language ("Identity, Voice and Image Data"), with or without other material, throughout the world, without limitation, for television, radio, video, theatrical medium picture, or any other medium and any other purpose by the IWUF or the Organizing Committee through any devices now known or hereafter devised and I do hereby waive any compensation in regard thereof as well as any future rights to the aforementioned. I also consent to the collecting, processing and use of all above-mentioned Identity, Voice and Image Data by the IWUF and the Organizing Committee for commercial and promotional services of sponsors and media partners as well as, where necessary, by third parties for the purpose of facilitating my participation an accreditation in the event (e.g. law enforcement authorities, border services agencies etc.).

Furthermore, while I note that the IWUF and the Organizing Committee will take into consideration my needs to rest, train and prepare for the events, I agree to be reasonably available during the Events for TV/digital/radio interviews, promotional or press photo sessions and press conferences at the dedicated areas.

If any provision of this Waiver is deemed to be invalid or unenforceable, the remaining provisions shall remain in full force and effect. This Waiver shall be governed by the IWUF Constitution, the further applicable Rules established by the IWUF and the Organizing Committee and, subsidiarily, by Swiss law.

I have read and fully understand the waiver listed above.

**\*\*For athletes under the age of 18 -This waiver must be signed by their parent or legal guardian\*\***

Signature of Participant	Signature of Parent/Legal Guardian	Name of Parent/Legal Guardian
	(If participant is under 18 years of age)	
Date	Date	Date



Annex 2

## 17<sup>th</sup> World Wushu Championships Medical Certificate (Sample)

### 1. ATHLETE INFORMATION

Surname				Color ID Photo
Given Name(s)				
Country		Postal Code		
Passport No.		Telephone No.		
Email				
Address				

### 2. QUESTIONS FOR ATHELETE (Attach relevant documents if you answered 'yes' to any of the following)

Is a doctor currently treating you?	
Have you ever been unconscious or had a concussion?	
Have you been hit hard in the head in the last 6 months?	
Have you had any headache in the last 2 weeks?	
Do you have any problems with bleeding?	
Do any diseases run in your family?	
Have you had any surgery?	
Have you ever had to stay in a hospital?	
Do you have any medical condition?	
Do you have a history of seasonal or drug allergies?	
Is there a history of sudden death under 45 years old in the family?	

### 3. MEDICAL DOCTOR INFORMATION

Surname	
Given Name(s)	
Telephone No.	
Address	

**4. MEDICAL EXAMINATION**

Item				Abnormalities
Head	Cranial nerves, eyes, pupil size and reactivity. Fundi. Vision by chart.	Normal	Abnormal	
	Mouth, teeth, throat	Normal	Abnormal	
	Ears	Normal	Abnormal	
	Temporomandibular joint	Normal	Abnormal	
	Brain Examination: electroencephalogram (EEG) Test (Sanda athletes only)	Normal	Abnormal	
Neck	Cervical spine, lymph nodes	Normal	Abnormal	
Chest	Breath sounds, rib, tenderness on compression	Normal	Abnormal	
Neurological System	Reflexes	Normal	Abnormal	
	Verbal responses	Normal	Abnormal	
	Motor responses and balance	Normal	Abnormal	
Cardiovascular System	Heart rate	Normal	Abnormal	
	Blood pressure	Normal	Abnormal	
	Heart examination: electrocardiogram (ECG) Test	Normal	Abnormal	
Medications Used	Name and dosage	Yes	No	

**5. DOCTOR CONFIRMATION**

I confirm that the Athlete is <input type="checkbox"/> fit / <input type="checkbox"/> not fit to participate in the competition.	Signature:  Place/Date:
--	-------------------------------

**6. NATIONAL FEDERATION CONFIRMATION**

**I confirm that the above information provided is true and correct.**

National Federation	
Name of Representative	
Title of Representative	
Signature:	Date:



## Annex 3

# **International Wushu Federation (IWUF) Brand Control Guidelines for Wushu Competition Uniforms (excerpt)**

## **PURPOSE**

To ensure sponsor and manufacture rights by establishing a standard for brand placement on uniforms and other clothing items used during IWUF wushu competition.

## **STANDARDS & GUIDELINES**

Uniforms of athletes, coaches and team officials

## **GENERAL REQUIREMENTS**

The manufacturer logo may appear once on each piece of clothing, with an area of up to 20 cm<sup>2</sup>. Note that only the quantity and size of logos appearing on uniforms will be assessed during the competition, and logos will not be reviewed for accuracy or adherence to brand standards.

The manufacturer logo may appear once on each accessory item (paired accessories are considered as two items), with an area of up to 6 cm<sup>2</sup>.

A manufacturer logo may appear once on each shoe or foot item (paired shoes or foot items are considered as two items), with an area of up to 6 cm<sup>2</sup>.

A national/regional Olympic Committee flag, a national/regional wushu federation flag/logo may each appear once where specified, with an area of up to 20 cm<sup>2</sup> each.

## **WUSHU TAOLU COMPETITION UNIFORM REQUIREMENTS**

### **Top/Jacket**

#### **Front**

No advertisements or logos may appear on the collar.

A flag may appear on the left chest area, with an area of up to 20 cm<sup>2</sup>.

The manufacturer logo may appear on the right chest area, with an area of up to 20 cm<sup>2</sup>.

No advertisements may appear in other areas.

#### **Back**

Sponsor or other logos may be displayed in other areas. The total number of sponsor or other logos may not exceed three, with a maximum area of 20 cm<sup>2</sup> each.

## Pants/Trousers

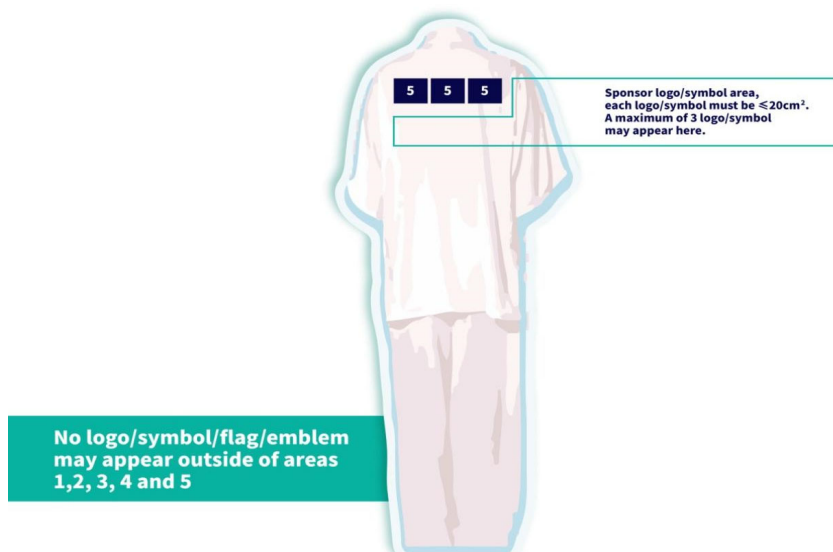
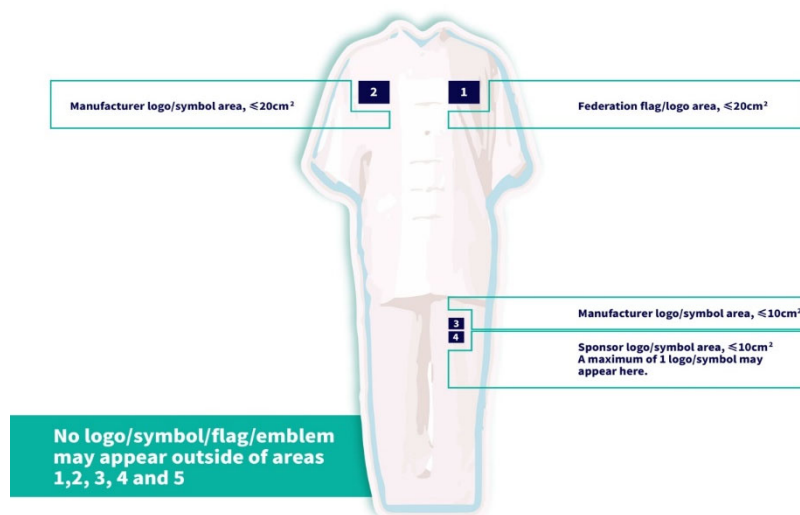
### Left leg

The manufacturer logo may be arranged on the top, with an area of up to 10 cm<sup>2</sup>.

Sponsor logos may appear below the manufacturer's logo but may not appear within 5 cm of the manufacturer's logo, with an area of up to 10 cm<sup>2</sup>.

### Right leg

No logo, flag, or other emblem may appear

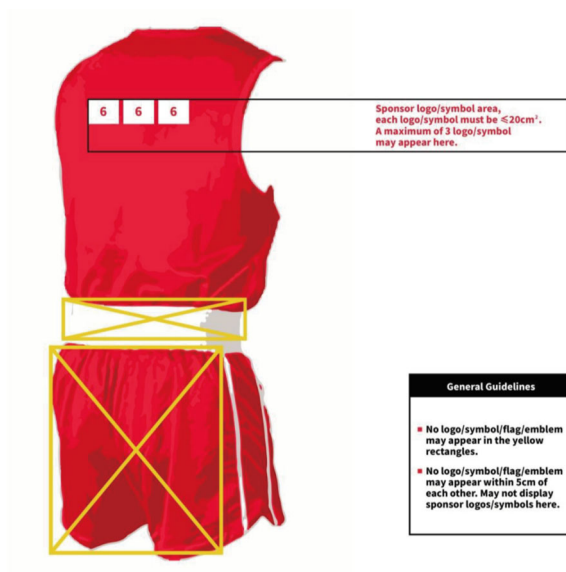






# 17TH WORLD WUSHU CHAMPIONSHIPS

Aug. 31-Sep. 8, 2025 / Brasilia, Brazil



# WU C S

IWUF APP



- RECOGNIZED BY / IN PARTNERSHIP WITH -

International Federation  
recognised by the



International  
Olympic  
Committee



INTERNATIONAL SCHOOL SPORT FEDERATION



- OFFICIAL SOCIAL MEDIA PLATFORMS -



- IWUF APP -



- IWUF GLOBAL PARTNER -

恒源祥®

- IWUF GLOBAL SUPPLIER -

